



Always Make A Great Entrance.

Why Therma-Tru



- **Limited Lifetime Warranty**

We stand behind more parts of a door system for longer than any other door company because we make or specify everything that goes into it. A Therma-Tru fiberglass door system is backed by the industry's most comprehensive lifetime limited warranty.

- **Energy Efficiency**

In any region or climate, energy efficiency is key. Thousands of Therma-Tru door and glass options are ENERGY STAR and National Fenestration Rating Council (NFRC) certified, and help save money on energy costs.

- **Curb Appeal and Value**

We all want to get the most out of every dollar we spend, and installing an attractive front door is a cost-effective way to improve your home's curb appeal and perceived value. In fact, an independent research company found that a home with an enhanced Therma-Tru door system added to its perceived value by as much as five times the cost of the door itself.





• Therma-Tru. You're in Expert Hands.

Why Heister House Millworks

- **Quality Reputation**

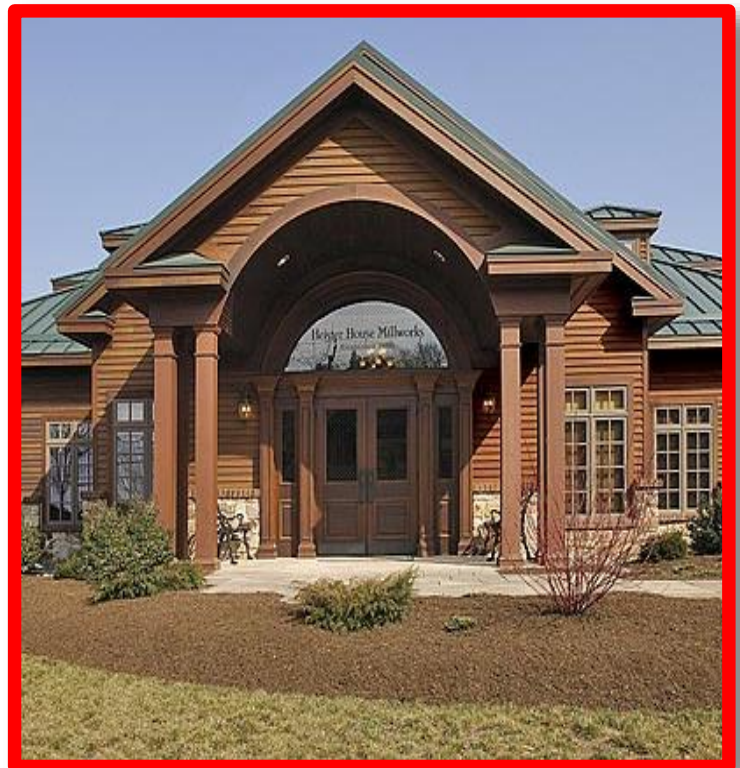
We've been supplying quality millwork products to builders and remodelers for more than 25 years. And our factory trained assembly team takes care to build to Therma-Tru specifications for long term, trouble-free operation and performance.

- **Our Products**

Heister House stocks the necessary components to assemble the door styles shown in this brochure. We receive direct shipments from Therma-Tru and build these doors ourselves in order to keep your costs as low as possible. And, we can prefinish your door panels in one of 24 different colors.

- **Distributor Support**

We've partnered with Reeb Millwork, one of the largest millwork distributors in the country, to be able to offer you the broad Therma-Tru product line in a lead-time that fits your construction schedule. We can typically provide special order doors in 2 weeks or less. Reeb offers prefinished doors and frames in a variety of paint and stain options.



Heister House Millworks Inc. | 1937 Troup Valley Road | Mt Pleasant Mills, PA 17853
| Ph. 800-326-9873



Our Specifications



Frame

- Composite jambs, mull posts, and brick mould with a white PVC cap
- Low maintenance product that doesn't need painting
- 6- 9/16" wall thickness

Door Panels*

- Smooth-Star®, smooth fiberglass doors
- Excellent durability for a clean painted finish

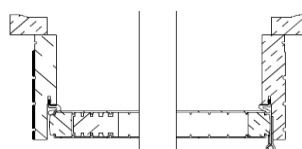
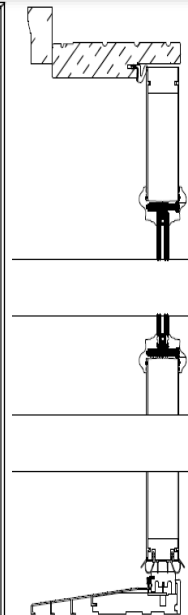
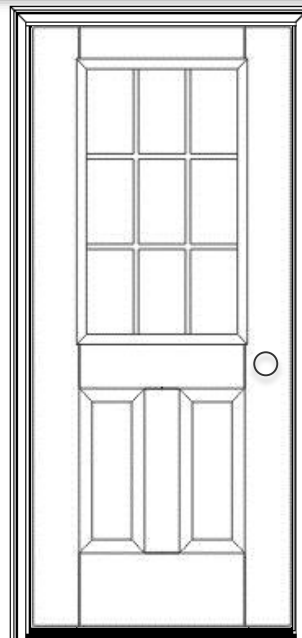
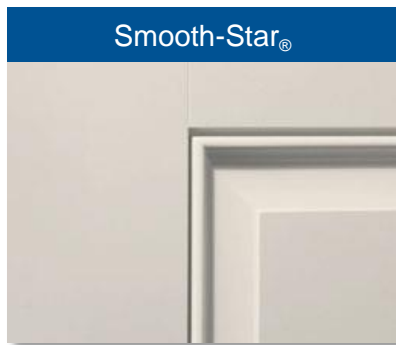
Sill and Weather stripping*

- Composite, adjustable sill and white compression weather stripping
- Your best protection against air and water infiltration

Door Lites*

- Double-pane insulated glass with white, grille-between-the-glass, flat bar divided lites
- Beautiful appearance and easy cleaning

*Therma-Tru supplied components





Smooth-Star[®]



Entry and side doors



Style # S210



Style # S255



Style # S296



Style # S289



Style # S206



Style # S262



Style # S118



Style # S108

Smooth-Star is the answer when the best look for the home is delivered in a sleek, paintable package. The more attractive and durable alternative to steel, Smooth-Star fiberglass doors are ready-to-paint with crisp, clean contours that meet the needs of homeowners seeking more color options for their doorways.

Note: Product images show exterior side of door. Colors may vary from an actual application due to fluctuations in finishing. Glass privacy ratings may be more or less than indicated, based on glass design and size of glass. Glass designs may differ from depiction due to handcrafting and size of glass. See your Therma-Tru seller or visit www.thermatru.com for details on limited warranties and exclusions, glass privacy ratings and designs, and ENERGY STAR[®] qualified products.

©2014 Therma-Tru Corp. All rights reserved. ENERGY STAR is a government program that helps consumers protect the environment through superior energy efficiency and is a registered trademark of the U.S. Department of Energy and the U.S. Environmental Protection Agency.

www.thermatru.com



Main Entrance Systems

Available with one sidelight

Smooth-Star® Entry Door Systems

www.thermatru.com



Door Style # S210
Sidelights Style # S263SL



Door Style # S210
Sidelights Style # S308SL



Door Style # S210
Sidelights Style # S100SL



Door Style # S255
Sidelights Style # S263SL



Door Style # S255
Sidelights Style # S308SL



Door Style # S255
Sidelights Style # S210SL

Note: Product images show exterior side of door. Colors may vary from an actual application due to fluctuations in finishing. Glass privacy ratings may be more or less than indicated, based on glass design and size of glass. Glass designs may differ from depiction due to handcrafting and size of glass. See your Therma-Tru seller or visit www.thermatru.com for details on limited warranties and exclusions, glass privacy ratings and designs, and ENERGY STAR® qualified products.

©2014 Therma-Tru Corp. All rights reserved. ENERGY STAR is a government program that helps consumers protect the environment through superior energy efficiency and is a registered trademark of the U.S. Department of Energy and the U.S. Environmental Protection Agency.

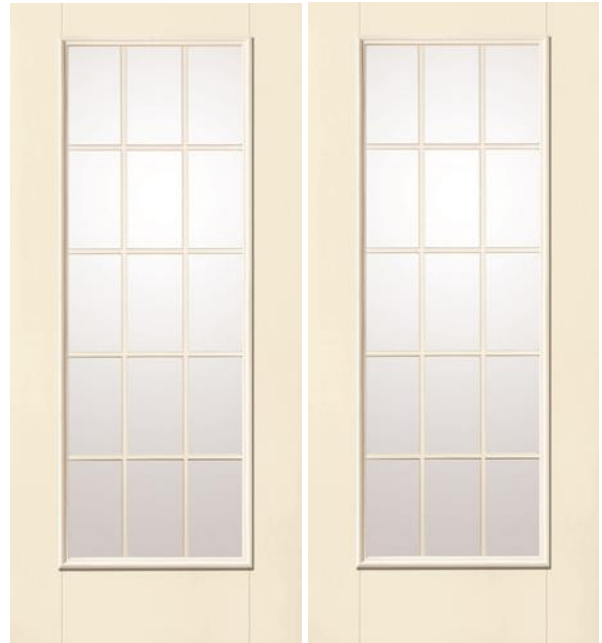




Smooth-Star[®] Patio and Double Door Systems



Door Style # S118



Door Style # S108

**Heister House Millworks Inc. | 1937 Troup Valley Road | Mt Pleasant Mills, PA 17853
| Ph. 800-326-9873**

Note: Product images show exterior side of door. Colors may vary from an actual application due to fluctuations in finishing. Glass privacy ratings may be more or less than indicated, based on glass design and size of glass. Glass designs may differ from depiction due to handcrafting and size of glass. See your Therma-Tru seller or visit www.thermatru.com for details on limited warranties and exclusions, glass privacy ratings and designs, and ENERGY STAR[®] qualified products.

©2014 Therma-Tru Corp. All rights reserved. ENERGY STAR is a government program that helps consumers protect the environment through superior energy efficiency and is a registered trademark of the U.S. Department of Energy and the U.S. Environmental Protection Agency.

www.thermatru.com

